

PROGRAM
Seeing Stars

SEPTEMBER 16-17, 2022

PRESENTED BY
THE QUILTER'S GUILD
OF
PARKER COUNTY



LOCATION:
TEXAS CHURCH OF GOD
2240 FORT WORTH HWY
WEATHERFORD, TX 76086

QGPC is a 501(c)(3) non-profit organization.
All proceeds benefit citizens/organizations
in Parker County. Thank you for your support.

Welcome to the 2022 Quilt Show – Seeing Stars!

The Quilter's Guild of Parker County (QGPC) has a long history in our community and the surrounding area. We have over 130 members this year, which is the largest number ever for our organization. Quilters throughout the area enjoy monthly meetings, many with nationally known speakers, workshops to learn new techniques, quilting bees to enjoy each other's company, and a wonderful monthly newsletter.

Our members make over 300 quilts a year that we give to various organizations throughout Parker County as a part of our Comfort Quilts

program. People of all ages, from newborn to elderly, appreciate these quilts when they have encountered difficult times.

We have a spectacular show put together for you, with 116 entries that highlight many techniques, designs and colors. Take your time to study the quilts – you will be rewarded with an appreciation of the hard thought and work that went into each one.

Many thanks to the Committee that put all of this together, under the direction of Mary Williams. Pam Luke and Anita Ruthenberg worked tirelessly to make this show happen. Many other Guild members have worked to set up, man the booths, and provide assistance during the show. Thank you all!

I hope you enjoy the show and walk away with new inspiration for your own projects. I also hope you will consider joining the Guild.

Thank you for attending our show –

Rex Shrauner, President
QGPC

Our Judge

Marilyn Hardy

Marilyn Hardy of Tyler, Texas was one of the founding members of the Quilters Guild of East Texas. Through the years she has served her guild in many capacities, including president, quilt show chairman, judging coordinator, and newsletter editor. For her service to the guild, she was honored with a lifetime membership.



It was through her volunteering as quilt show judging coordinator that Marilyn became interested in the process of judging quilt shows. She began judging and went further to become a National Quilting Association Certified Judge in 2008. She is one of the charter members of the National Association of Certified Quilt Judges.

For Marilyn quilting is more than a hobby—it is a major focus, and her judging is an outgrowth of her passion for quilts. Marilyn explains, “As a quilt show judge, I recognize, reward, and encourage excellence in quilt design, workmanship, and creativity. My hope is that the comments I make as a judge will be insightful, helpful, and encouraging to those quilters who have dedicated themselves to starting and finishing a quilt.”

Award Recipients

(Click on the Quilt Name to See the Quilt)

Award	Quilt Name
Best in Show	<u>Groovy Coral Reef</u>
Judge’s Choice	<u>Christmas Frames</u>
NACQ Award	<u>My Scrapbook of American Quilts</u>
Best Longarm Quilting	<u>Farmer’s Wife</u>

Best Domestic Machine Quilting	<u>Happy Circles</u>
Best Hand Quilting	<u>Q.B.L. Fractured</u>
Best Original Design	<u>Rory</u>
Best Auction Mini Quilt	<u>Daydreams</u>
Best President's Challenge	<u>Who Are You?</u>
Viewer's Choice	<u>Lulu in Quarantine All Dressed Up and No Place To Go</u>
Large Pieced	
First Place	<u>Groovy Coral Reef</u>
Second Place	<u>Splash of Lime</u>
Third Place	<u>Farmer's Wife</u>
Honorable Mention	<u>The Color Diamond</u>
Honorable Mention	<u>My Beautiful Ladies</u>
Honorable Mention	<u>Hill Country Gardens</u>

Medium Pieced	
First Place	<u>Dresden Plate – 30’s Style</u>
Second Place	<u>Colour My World</u>
Third Place	<u>Winter Memories</u>
Honorable Mention	<u>Medallion Quilt</u>
Honorable Mention	<u>A Swoon Inspiration</u>
Honorable Mention	<u>Lulu in Quarantine All Dressed Up and No Place to Go</u>
Honorable Mention	<u>Q.B.L. Fractured</u>
Small Pieced	
First Place	<u>A Kaleidoscope of Redwork</u>
Second Place	<u>Grunge Mandala</u>
Third Place	<u>Rainbow Flowers</u>
Honorable Mention	<u>Shine on Harvest Moon</u>
Honorable Mention	<u>Dresden Blooms</u>
Honorable Mention	<u>Live Simply</u>
Applique	
First Place	<u>Black Beauty</u>
Second Place	<u>Christmas Frames</u>
Third Place	<u>Reverse Applique Rose Window</u>
Honorable Mention	<u>Talavera Medallion</u>
Honorable Mention	<u>Feather</u>
Honorable Mention	<u>It’s a Miracle Garden</u>
Honorable Mention	<u>Happy Circles</u>

Award	Quilt Name
Group	
First Place	<u>Dancing Nine Patch</u>
Second Place	<u>Polka Dot Churn Dash</u>
Third Place	<u>Rabbits Return</u>
Other or Mixed Technique	
First Place	<u>My Scrapbook of American Quilts</u>
Second Place	<u>Bookcase Quilt</u>

Third Place	<u>Serra and Brent Wedding Quilt</u>
Honorable Mention	<u>Consider the Lillies</u>
Honorable Mention	<u>A Year with the Kids</u>
Miniature	
First Place	<u>Succulents</u>
Second Place	<u>Lone Star State</u>
Third Place	<u>Chewbacca: Fiercely Loyal</u>
Honorable Mention	<u>Blue Plate Special</u>
Honorable Mention	<u>Little Red Bird</u>
Junior	
First Place	<u>Mint Chocolate Sampler</u>
Second Place	<u>Square Dance</u>

Award	Quilt Name
Modern	
First Place	<u>The Library</u>
Second Place	<u>Asian Safari</u>
Third Place	<u>New Moon</u>
Honorable Mention	<u>Aurora Borealis</u>
First Time Show Entrant	
First Place	<u>Picture the World</u>
Second Place	<u>Scrap Obsession</u>
Third Place	<u>Home on the Range</u>
Honorable Mention	<u>Gnome is Where the Garden Grows</u>
Quilt Show Theme	
First Place	<u>It's Written in the Stars</u>
Second Place	<u>Showering Stars</u>
Third Place	<u>Stars Over Ukraine</u>
Honorable Mention	<u>So Many Blessings</u>
Honorable Mention	<u>Cosmic Chaos</u>

Large Pieced (81" or greater)
(Click Quilt Number to See the Quilt)

Quilt Number	Quilt Name
<u>101</u>	Taos
<u>102</u>	My Perfectly Imperfect Quilt
<u>103</u>	My Blue Thread Quilt
<u>104</u>	Double Wedding Ring
<u>105</u>	Splash of Lime
<u>106</u>	My Beautiful Ladies
<u>107</u>	Groovy Coral Reef
<u>108</u>	Rainbow Log Cabin
<u>109</u>	The Color Diamond
<u>110</u>	Hill Country Gardens
<u>111</u>	Wedding Ring Quilt
<u>112</u>	Perseverance
<u>113</u>	Farmer's Wife
<u>114</u>	Majestic Red Stag
<u>115</u>	Stephen F. Austin Memories
<u>116</u>	003 Star
<u>117</u>	Whirlwind From The East

<p>Hardwood Designs Bruce & Dartle Atherton</p> <p>Quilt clamps, ladders & racks Patterns & towels</p> <p>520-249-8797 520-249-1102 batherton2@gmail.com</p>	
<p></p>	<p>668 Ross Lane Boyd, Texas 76023 www.displayyourquilt.com</p>



Let us finish your quilt tops! We offer computerized edge-to-edge quilting on our APQS Millie. Our price of .03 cents per square inch include Hobbs batting, Superior Omni thread, and a computerized design of your choice.

Mention this ad for a 10% Discount on your first quilt top!

Paul and Kathy Gause
Yellow Rose Quilts
817-718-7888 (N. Richland Hills)
www.YellowRoseQuilts.com

Medium Pieced (60" to 80")

(Click Quilt Number to See the Quilt)

Quilt Number	Quilt Name
<u>201</u>	Kindred Souls
<u>202</u>	Colour My World
<u>203</u>	Lemon Pepper
<u>204</u>	Chez Moi Leftovers
<u>205</u>	Dresden Plate - 30's Style
<u>206</u>	Medallion Quilt
<u>207</u>	Autumn Splendor
<u>208</u>	Fiery Lonestar
<u>209</u>	Windows in Time
<u>210</u>	Q.B.L. Fractured
<u>211</u>	Crossroads to Colorado
<u>212</u>	Purple Majesty
<u>213</u>	Winter Memories
<u>214</u>	Christmas Joy
<u>215</u>	Pinehurst
<u>216</u>	A Swoon Inspiration
<u>217</u>	Treasured Tops
<u>218</u>	Optical Card Trick
<u>219</u>	Alaskan Memories
<u>220</u>	Lulu in Quarantine All Dressed Up and No Place To Go
<u>221</u>	Bountiful Blessings
<u>222</u>	Freedom

806 Palo Pinto Street
Weatherford, TX. 76086

817-599-7810

Quilting Around

*Block of the Months and
Our famous Kits.*

www.quiltingaround.com



Hollis Threads

New Quilt Shop
3980 Boat Club Rd. Ste 116
Lake Worth, TX 76135
Mon-Sat 9am-5pm Sun Closed
817-862-9055



Small Pieced (31" - 59")
(Click Quilt Number to See the Quilt)

Quilt Number	Quilt Name
<u>301</u>	Australian Phoenix
<u>302</u>	Red Hot
<u>303</u>	Grunge Mandala
<u>304</u>	Live Simply
<u>305</u>	Dream Big Leaf
<u>306</u>	Fractured Skyline
<u>307</u>	Shine on Harvest Moon
<u>308</u>	Oriental Windows
<u>309</u>	Sisters' Challenge - Kimono
<u>310</u>	Gatherer's Star
<u>311</u>	Elephants in the Rainbow
<u>312</u>	Rainbow Flowers
<u>313</u>	A Kaleidoscope of Redwork
<u>314</u>	Row by Row
<u>315</u>	Dresden Blooms
<u>316</u>	Disappearing Mary Engelbreit



Quilting
is my
Cup of Tea

Full Service Quilt Shop

classes
fabric, notions, gifts
longarm quilting service
custom T-shirt/memory quilts

417 E Highway 199, Suite 3
Springtown, TX 76082
(682) 615-7071



Patti's Last Resort

6495 Smoky Hill Ct.

Granbury (Acton), Texas

817-326-3287

www.pattislastresort.com

pattislastresort@gmail.com

RETREAT CENTER

for

Creative People

Quilt Shop

Fabric, Baby Lock Machines

Notions, Classes

Applique (any size over 31")
(Click Quilt Number to See the Quilt)

Quilt Number	Quilt Name
<u>401</u>	Bye, Bunny Bunting
<u>402</u>	Bad Hare Day
<u>403</u>	Love from Above
<u>404</u>	Rory
<u>405</u>	Elmer
<u>406</u>	Christmas Frames
<u>407</u>	Black Beauty
<u>408</u>	It's a Miracle Garden
<u>409</u>	Happy Circles
<u>410</u>	Talavera Medallion
<u>411</u>	Blue Plate Special
<u>412</u>	My Serenity Garden
<u>413</u>	Reverse Applique Rose Window
<u>414</u>	Feather

Group (made by three or more people, any size)
(Click Quilt Number to See the Quilt)

Quilt Number	Quilt Name
<u>501</u>	Rabbits Return
<u>502</u>	Dancing 9 Patch



The Scissor Guy
Hayward Erwin

P.O. Box 944
Riverside, TX 77367

Phone: (936) 594-4829
Cell: (936) 581-2454
E-mail: hayward@windstream.net

Scissor sharpening service by Scissor Guy.
Sharpen scissors, pinking shears, knives, rotary
blades, etc.

Other or Mixed Technique (any size)
(Click Quilt Number to See the Quilt)

Quilt Number	Quilt Name
<u>601</u>	Lucy Boston Orient
<u>602</u>	Hexagons Meet Yo-Yos
<u>603</u>	Bookcase Quilt
<u>604</u>	The Dresden Eclipse
<u>605</u>	My Scrapbook of American Quilts
<u>606</u>	Gulf Shores Memories with Meme & Pawpaw
<u>607</u>	Consider the Lilies
<u>608</u>	Serra and Brent Wedding Quilt
<u>609</u>	A Year with the Kids

Miniature (Less than 31")
(Click Quilt Number to See the Quilt)

Quilt Number	Quilt Name
<u>701</u>	Mask-er-aid
<u>702</u>	Haunted Neighborhood
<u>703</u>	Blue Plate Special
<u>704</u>	Lone Star State
<u>705</u>	Hearts Make Houses Homes
<u>706</u>	Succulents
<u>707</u>	Newly Hatched
<u>708</u>	Chewbacca: Fiercely Loyal
<u>709</u>	Little Red Bird

Junior (age 16 or younger)
(Click Quilt Number to See the Quilt)

Quilt Number	Quilt Name
<u>801</u>	Square Dance
<u>802</u>	Mint Chocolate Sampler

Modern (any size)
(Click Quilt Number to See the Quilt)

Quilt Number	Quilt Name
<u>901</u>	Asian Safari
<u>902</u>	Aurora Borealis
<u>903</u>	The Library
<u>904</u>	My Yoyo Quilt
<u>905</u>	Free Wheeling Circles
<u>906</u>	My Heart
<u>907</u>	Color Wheel Maze
<u>908</u>	New Moon

First Time Quilt Show Entrant (any size)
(Click Quilt Number to See the Quilt)

Quilt Number	Quilt Name
<u>1001</u>	Scrap Obsession
<u>1002</u>	Picture the World
<u>1003</u>	Orange Challenge
<u>1004</u>	Gnome is Where Your Garden Grows
<u>1005</u>	Evening Swans
<u>1006</u>	I Love Daisies
<u>1007</u>	Home on the Range

Quilt Show Theme (any size)
(Click Quilt Number to See the Quilt)

Quilt Number	Quilt Name
<u>1101</u>	Log Cabin Star
<u>1102</u>	Cosmic Chaos
<u>1103</u>	Showering Stars
<u>1104</u>	So Many Blessings
<u>1105</u>	Starry Night in the City
<u>1106</u>	It's Written in the Stars
<u>1107</u>	Stars Over Ukraine
<u>1108</u>	Friendship Stars All Around the Town
<u>1109</u>	Texas Dancing Stars

101 Taos 98 x 97

Entered by: Nancy Gengler

Pieced by: Nancy Gengler

Longarm Quilted by: Nancy Gengler



The beautiful colors of this Chris Hoover kit caught my attention and the intricate (at least for me) piecing design made this a challenge to complete.

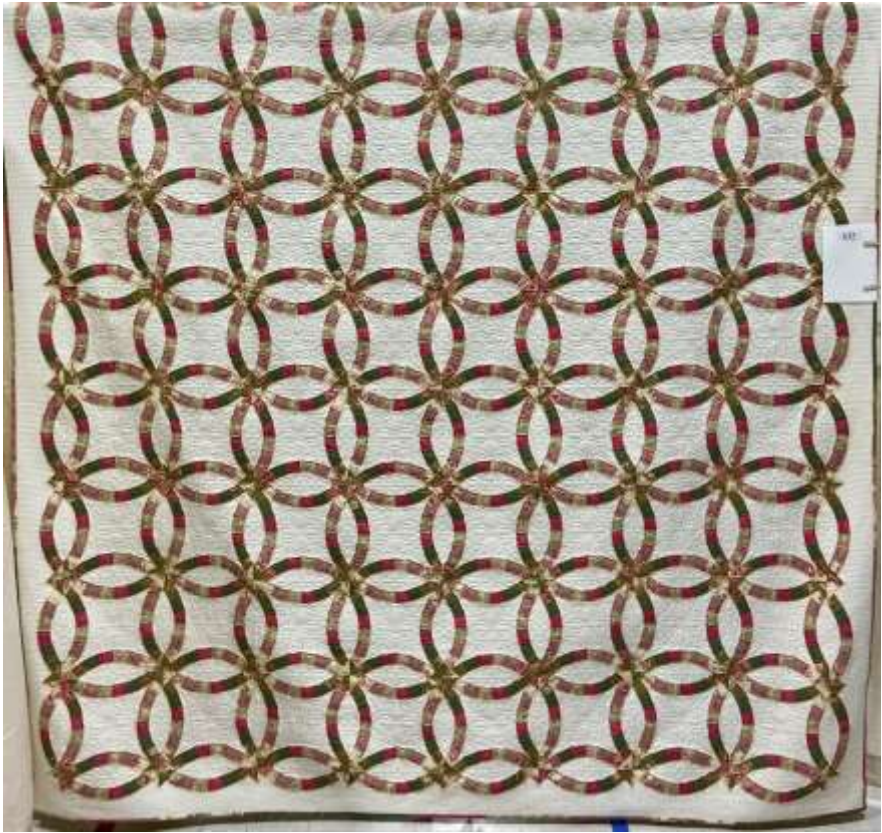
[Return to Index](#)

102 My Perfectly Imperfect Quilt 102 x 102

Entered by: Nancy Gengler

Pieced by: Nancy Gengler

Longarm Quilted by: Nancy Gengler



The traditional double wedding ring pattern has been a quilt on my "challenge" list. After choosing the fabrics, I enjoyed piecing the quilt top over a few months. However, it was more of a challenge to actually begin the quilting! After waiting in the to-be-quilted line for several years, it is now complete.

[Return to Index](#)

103 My Blue Thread Quilt 101.25 x 103

Entered by: Dora Long

Pieced by: Dora Long

Hand Quilted by: Dora Long



I have hand quilted throughout my life any time I would get spare time, from waiting to pick up my husband in the hay field to waiting on our farm workers or kids, I would quilt. This quilt pattern I designed was made from fabric from a Five and Dime store near the stockyards in Fort Worth. Limited fabric color choices necessitated a midnight blue sky with ranges of dusky pink stars. There was no other reasonable choice other than double quilting it in dark blue thread. It continues to be well-loved to this day.

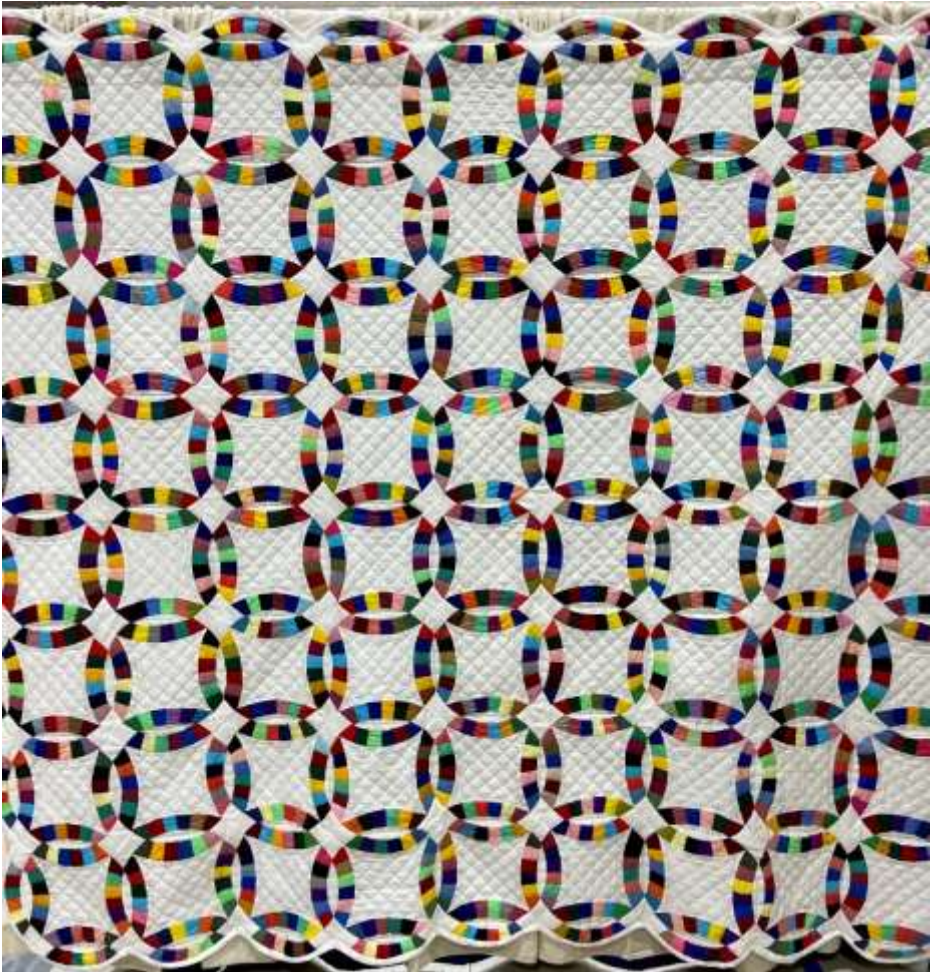
[Return to Index](#)

104 Double Wedding Ring 100 x 96

Entered by: Jean Jeske

Pieced by: Jean Jeske

Hand Quilted by: Jean Jeske



Dora Long gave me all the colored pieces sewn together and said, "Make a king size wedding ring quilt." So I did.

[Return to Index](#)

105 Splash of Lime 102 x 102

Entered by: Will Simpson

Pieced by: Will Simpson

Hand Quilted by: Will Simpson



Wanted to try something scrappy. Saw this pattern and was shocked how easy it was.

[Return to Index](#)

[Return to Award Recipients](#)

106 My Beautiful Ladies 96 x 96

Entered by: Dixie Ehrhorn

Pieced by: Dixie Ehrhorn

Longarm Quilted by: Mary Harris



I love all things African. I especially love their beautiful and brightly colored fabrics. These ladies' dresses are all made from 100% Dutch Wax cotton made especially for the African communities. I feel fortunate to have been able to acquire this nice array of colors and prints.

[Return to Index](#)

[Return to Award Recipients](#)

107 Groovy Coral Reef 96 x 96

Entered by: James Harper

Pieced by: James Harper

Longarm Quilted by: Mona Levingston



This Judy Niemeyer quilt pattern was started at my very first quilt retreat. I was able to finish it up over the next few months. With the curved piecing, it was very challenging for me. [Return to Index](#)

[Return to Award Recipients](#)

108 Rainbow Log Cabin 81 x 90

Entered by: Beth Collins

Pieced by: Beth Collins

Domestic Machine Quilted by: Beth Collins



This traditional log cabin design was an on-line class taught by Leah Day. My personal challenges were to use ONLY my fabric stash. If I didn't have exactly the color I wanted, then I just used acrylic paint mixed with fabric medium to create it. Another personal goal was to focus strictly on this project until it was totally completed. This log cabin was definitely my record setter because I did it, start to finish, in only three weeks. It was the largest project I had quilted on my domestic machine. Leah Day's walking foot instructions were a big help. I took the liberty of changing the color arrangement by using only the color wheel sequence on the other corners, instead of black as in the instructor's example. The biggest accomplishment was keeping up with the lessons. Deadlines and personal goals can be a big incentive!

[Return to Index](#)

109 The Color Diamond 85.5 x 85.5

Entered by: JoAnn Russell

Pieced by: JoAnn Russell

Longarm Machine Quilted by: Sassy Angel



I made triangle squares with my scraps and started putting them together and this quilt emerged! My stash contained so many nice colors, but the pieces were small. Now I have a quilt with all the colors and memories of the original quilts the scraps came from.

[Return to Index](#)

[Return to Award Recipients](#)

110 Hill Country Gardens 63 x 84

Entered by: Donna McGibboney

Pattern: Garden Dreams by Jason Yenter

Pieced by: Donna McGibboney

Longarm Machine Quilted by: Donna McGibboney



Sometimes when we are on a road trip, my hubby will ask if there is a quilt shop somewhere along the way. We were in Fredericksburg and went to One Quilt Place. He walked to a bolt of fabric on a table and said, "You ought to buy this." The clerk said, "Oh, here is the quilt you can make with that fabric." Eight yards of border fabric were very carefully cut with a kaleidoscope template. I started this three times, read instructions, looked at the quilt, and put it back on the shelf. The fourth time, I took a deep breath and started cutting. Turned out that the only difficult part was deciding where to place the template to start cutting.

[Return to Index](#)

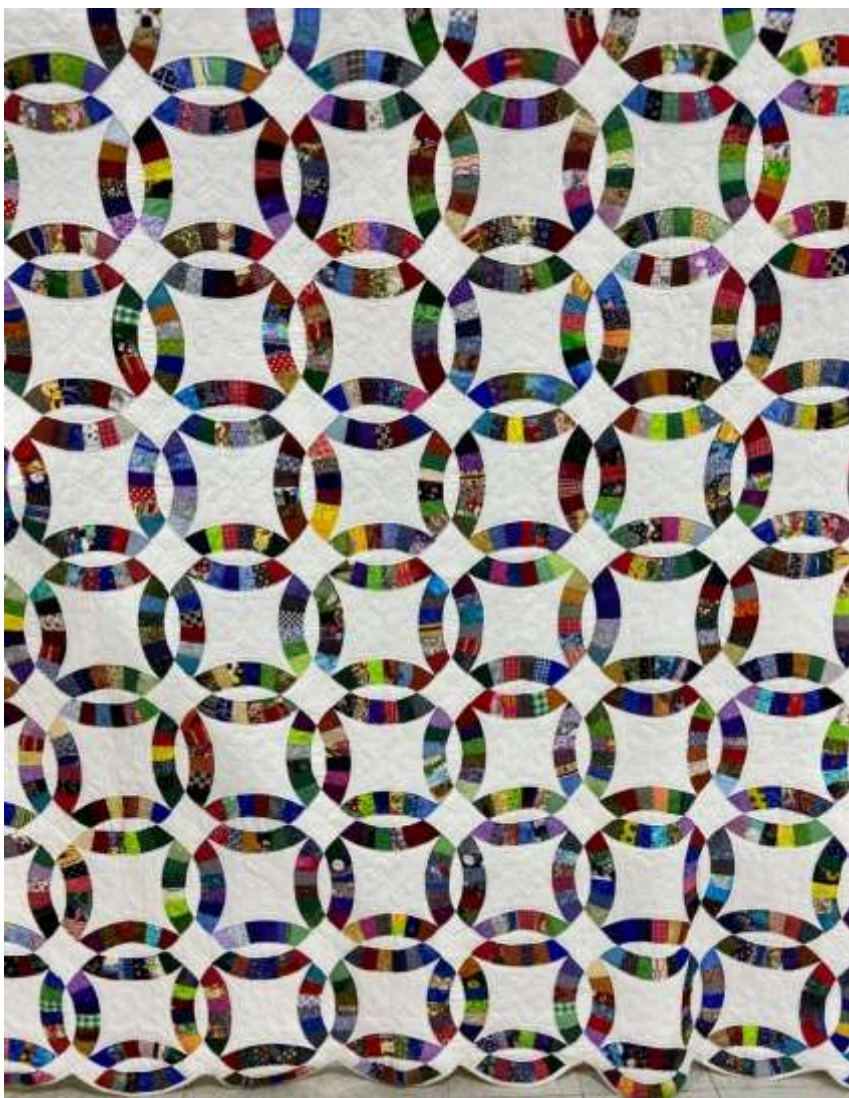
111 Wedding Ring Quilt 113 x 114

Entered by: Karen Wilkinson

Pattern: Garden Dreams by Jason Yenter

Pieced by: Karen Wilkinson

Hand Quilted by: Karen Wilkinson



This king size wedding ring quilt truly brings together two families. The top was hand pieced from old fabric scraps from sewing clothes by my Mom, Grandmother and Aunts. You can find very old fabric to newer '70s fabric because every inch is used in our family. The backing of the quilt is a large hand embroidered linen tablecloth made in the late 1940s by Bina Wilkerson, my husband's grandmother. While it is beautiful, it deserved a bigger role in our everyday lives, so it became part of the hand pieced and quilted wedding ring quilt that has a starring role on our bed everyday. It was quilted on both sides of each seam because that is what I was taught. It has held up to daily use as we honor our family memories.

[Return to Index](#)

[Return to Award Recipients](#)

112 Perseverance 110 x 100 1/2

Entered by: Dr. Carolyn Troupe

Pattern: Sue Guz Designs

Pieced by: Dr. Carolyn Troupe

Longarm Machine Quilted by: Carolyn Sponsky



This quilt has been one of the biggest challenges of my quilting career. I had no idea what I was getting into when my daughter pointed and said, "I like this one," at a quilt show. That was five years ago, but I persevered; and the final result has rewarded my tenacity. The quilt is French General fabric (except for one outlier), with bamboo batting and hand-guided quilting.

[Return to Index](#)

113 Farmer's Wife 70 x 82

Entered by: Mary Williams

Pattern: The Farmer's Wife Sampler by Laurie Aaron Hird

Pieced by: Mary Williams

Longarm Machine Quilted by: Rex Shrauner



I was intrigued by this "pattern" because it is a thick book of traditional blocks paired with letters from farmers' wives responding to a contest "Would you want your daughter to marry a farmer?", and I am a farmer's daughter who did not marry a farmer. I made about half the blocks in the book, which greatly sharpened my piecing skills. This setting is my adaptation because I wanted the blocks to stand out individually. Rex designed the beautiful quilting patterns, including unique designs to interpret the block names. Can you find these blocks and decypher the name? His quilting really brought the quilt to life!

[Return to Index](#)

[Return to Award Recipients](#)

114 Majestic Red Stag 80.5 x 84

Entered by: Cheryl Russell

Pieced by: Cheryl Russell

Longarm Machine Quilted by: Angie Clark



I used the fabric to create a picture. My piecing on the border depicts mountains. I appliquéd bear claws and have Aspen tree trunks growing up. I think of my husband and sons hunting in Colorado, Utah and Montana. Looking at this, I feel a calmness seeing God's beauty.

[Return to Index](#)

115 Stephen F. Austin Memories 68 x 88

Entered by: Jerre Dale

Pieced by: Jerre Dale

Longarm Machine Quilted by: Jerry Lindsey



This quilt was created for my daughter-in-law who attended Stephen F. Austin University. Since SFA has no licensed fabric on the market, I had to design my own. Each item is special for her--her Chi Omega red and yellow owl, the Piney Woods and dogwood flowers that surround the school are there. The purple and white colors and lumberjack mascot are there, as is her graduation date.

[Return to Index](#)

116 003 Star 72 x 100

Entered by: Dr. Carolyn Troupe

Pattern: Debbie Maddy "Broken Star"

Pieced by: Dr. Carolyn Troupe

Longarm Machine Quilted by: Sabrina Thompson



I love the sophistication yet simplicity of Maddy's star patterns. My pleasure is from playing with color and creating harmony in color. Music for the eyes! Plus, the COVID 2020 challenge of working only from my stash.

[Return to Index](#)

117 Whirlwind From The East 75 x 85

Entered by: Janette Duke

Pieced by: Janette Duke

Longarm Machine Quilted by: Donna McGibboney



My youngest granddaughter was adopted from China. I like to have items in my home that show her that her grandparents appreciate the beauty of her native culture. She can be a bit of a whirlwind which is why I gave the quilt its name. [Return to Index](#)

201 Kindred Souls 60 x 73

Entered by: Dianne Minter

Pattern by: Kindred Pinwheels by MSQC

Pieced by: Dianne Minter

Longarm Machine Quilted by: Sassy Angel



I make a lot of scrappy quilts but was tired of using tiny pieces. This tutorial appealed to me since it used bigger pieces for a beautiful result. It is quilted with puppies and bones because it will be gifted to friends with several dogs. [Return to Index](#)

202 Colour My World 70 x 70

Entered by: Becky Klein

Pattern by: The Quilt Show.com

Pieced by: Becky Klein

Longarm Machine Quilted by: Becky Klein



Colour My World is a block of the month from *thequiltshow.com*, designed by Wendy Williams. This is a paper pieced quilt.

[Return to Index](#)

[Return to Award Recipients](#)

203 Lemon Pepper 54 x 60

Entered by: Lynn Main

Pattern by: Madison Cottage Designs

Pieced by: Lynn Main

Longarm Machine Quilted by: Lynn Main



Sew strip sets together horizontally, then cut vertically to make blocks. Shift them around to get the arrangement you like. [Return to Index](#)

204 Chez Moi Leftovers 48 x 74.5

Entered by: Dr. Carolyn Troupe

Pattern by: "Posh" by Chez Moi (Moda)

Pieced by: Dr. Carolyn Troupe

Longarm Machine Quilted by: Carolyn Sponsky



"Chez moi" translates to "at home" or "my house." However you translate it, I have a lot of Chez Moi "Posh" fabrics in my stash, and I wondered what I was thinking when I purchased them. If there were to be a silver lining regarding the pandemic, perhaps for quilters, it is that we were forced to look inward into all those hidden places for fabrics and make them work in our projects.

[Return to Index](#)

205 Dresden Plate - 30's Style 78.5 x 78.5

Entered by: Karen Pickford

Pieced by: Karen Pickford

Longarm Machine Quilted by: Nancy Gengler



I chose a traditional block for this quilt, but designed my own setting - including sashing and borders. The backing is turned and stitched rather than using a binding because of the edge points. It was made several years ago, but finally completed in 2022.

[Return to Index](#)

[Return to Award Recipients](#)

206 Medallion Quilt 67 x 67

Entered by: Sandra Edmiston

Pattern by: Winnie Fleming

Pieced by: Sandra Edmiston

Longarm Machine Quilted by: Nancy Gengler



This quilt was made in a class by Winnie Fleming. We learned how to make pieced borders and pick out the design for the border. We learned to do mitered corners and how to calculate the size of plain borders between the pieced borders. I did not finish the quilt during the class. I had other projects to do, so I put it aside for over a year. I finally picked it up and put on the last border, had it custom quilted, and finished the quilt - three years later.

[Return to Index](#)

[Return to Award Recipients](#)

207 Autumn Splendor 59 x 76

Entered by: Dianne Minter

Pattern by: Deb Singer - Haytex

Pieced by: Dianne Minter

Longarm Machine Quilted by: Sassy Angel



This was my first experience doing a mystery quilt and I loved it! It was such a great experience to start with no idea of the end result and watch it come together. [Return to Index](#)

208 Fiery Lonestar 70 x 70

Entered by: James Harper

Pieced by: James Harper

Longarm Machine Quilted by: Denise Sajolt



I have always wanted to make a Lonestar pattern. So, taking a class, this is what I was able to create. [Return to Index](#)

209 Windows in Time 60 x 79.5

Entered by: Mary Williams

Pattern by: Quiltmaker Mag, Diane Harris, Designer

Pieced by: Mary Williams

Longarm Machine Quilted by: Will Simpson



I had been wanting to make a quilt for my horse shoer, and when I saw this pattern I knew it was the one. I have a stash of Civil War-like fabrics so I really enjoyed digging into that so no fabric is repeated.

[Return to Index](#)

210 Q.B.L. Fractured 60 x 72

Entered by: Ruth Arthur

Pattern by: Kathy Doughty

Pieced by: Ruth Arthur

Longarm Machine Quilted by: Ruth Arthur



This quilt is a result of a class I took from Kathy Doughty (Sydney, Australia) at Quilting by the Lake in Syracuse, NY in August 2013. It is hand quilted with perle cotton.

[Return to Index](#)

[Return to Award Recipients](#)

211 Crossroads to Colorado 64 x 80

Entered by: Cheryl Russell

Pattern by: Missouri Star/Crossroads

Pieced by: Cheryl Russell

Domestic Machine Quilted by: Cheryl Russell



I started this quilt on a retreat in Pagosa Springs, Colorado; hence the name "Crossroads to Colorado." It brings lovely memories to me.

[Return to Index](#)

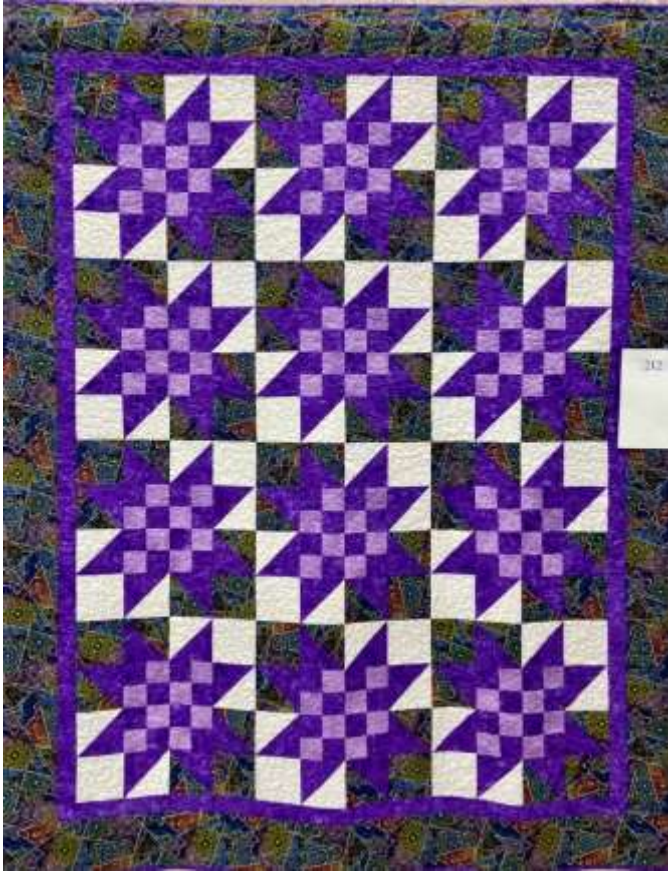
212 Purple Majesty 60 X 75

Entered by: Sandra McDonald

Pattern by: The Quilt Factory

Pieced by: Sandra McDonald

Domestic Machine Quilted by: Sandra McDonald



I loved this design and of course, I love purple. The name of the pattern is "Oh Beautiful" by The Quilt Factory. It was originally done in red, white and blue, which was beautiful, but I changed to purple colors. I also added one more row to make it rectangular instead of square. [Return to Index](#)

214 Christmas Joy 60 x 60

Entered by: Linda Poer

Pattern by: A kit

Pieced by: Linda Poer

Longarm Machine Quilted by: JoLynn O'Neil



This quilt kit was given to me by Donna Stark, a sweet friend who moved from our area. [Return to Index](#)

215 Pinehurst 74 x 80

Entered by: Nancy Gudino

Pattern by: Laundry Basket Quilts

Pieced by: Nancy Gudino

Longarm Machine Quilted by: Donna McGibboney



This quilt was made with Edyta Sitar fabric. Her description states, "Imagine the forest with stunning greens and light with red accents."

[Return to Index](#)

216 A Swoon Inspiration 69 x 69

Entered by: Shirley P. Reagan

Pattern by: Center block is from Camille Roskelly Swoon Block

Pieced by: Shirley P. Reagan

Longarm Machine Quilted by: JoLynn O'Neil



This medallion quilt was initiated during a borders class taught by Winnie Fleming. The center block was constructed using Camille Roskelly's Swoon block pattern (Thimbleblossoms). During the class, Winnie Fleming taught us precision piecing, mitering corners and use of simple units to design our own quilt borders. I designed the majority of the quilt borders during the class and completed it at home.

[Return to Index](#)

[Return to Award Recipients](#)

217 Treasured Tops 68 x 73

Entered by: Beth Collins

Pieced by: Beth Collins

Domestic Machine Quilted by: Beth Collins



These t-shirts are representations from my grandson, Bladen Formes's, journey through his teenage years. When I volunteered to make him a quilt, I had NO idea that he would have so many of them and want to use each one! My creative juices started to flow as I figured out a way to make it reversible, colorful, and balanced. Each piece of fabric is backed with a delicate, fusible stabilizer. The only solution I could think of to quilt it myself was to use transparent thread in both the top and bobbin. I spent more time dreading that stage than actually quilting it, I think! It is put together using the Quilt-as-you-go method. This project is definitely unique, one-of-a-kind, and more importantly -- a functional way to keep memories alive in an item that Bladen will treasure.

[Return to Index](#)

218 Optical Card Trick 69 x 69

Entered by: Debbie Shrauner

Pattern by: Nancy Mahoney's Townhouse

Pieced by: Debbie Shrauner

Longarm Machine Quilted by: Rex Shrauner



Rex and I went on a Quilting Cruise in March 2020, and this was the pattern I chose to complete. Nancy Mahoney was one of the featured quilt teachers onboard, and I loved how she used the blue batiks in her creative design. Rex wanted to custom quilt it, and drew an artistic medallion to fill the partial squares and center.

[Return to Index](#)

219 Alaskan Memories 53 x 60

Entered by: Kathleen Poznick

Pieced by: Kathleen Poznick

Longarm Machine Quilted by: Sassy Angel



I have always wanted to take an Alaskan cruise but could never take vacation during the summer. After I retired, I was able to fulfill that wish. My grandson, Bobby; my sister, Marilyn; and my cousin, Pam, joined me on the cruise. While in one of the ports, Pam and I visited a quilt shop. It had to be a very quick trip as we had to return to the ship soon. I grabbed FQs while Pam went next door and got some Indian Fry Bread (with sugar and cinnamon!). Racing back to the ship with our haul, we made it just before they rolled up the gangplank! Great memories that I wanted to keep inspired me to make this throw.

[Return to Index](#)

220 Lulu in Quarantine All Dressed Up and No Place To Go 67 x 70

Entered by: Marsha Corley

Pattern by: Dogs in Sweaters by Elizabeth Hartman

Pieced by: Marsha Corley

Longarm Machine Quilted by: Marsha Corley



My niece has a dachshund named Lulu. What could be more fun than dressing up a cute little dog? So the idea of making a "dress up" quilt depicting Lulu was born. Then COVID quarantine came by, and "Lulu in Quarantine" was created.

[Return to Index](#)

[Return to Award Recipients](#)

221 Bountiful Blessings 70 x 70

Entered by: Marsha Corley

Pattern by: Bountiful Blessings by Betty Ann Standiferd

Pieced by: Marsha Corley

Longarm Machine Quilted by: Marsha Corley



In 2014, I took a two-month trip to the west and north to see the sights and visit friends, and, of course, visit quilt shops along the way. I found this pattern at Betty's Quilting and Design in Albuquerque, NM, and had to have it.

[Return to Index](#)

222 Freedom 47 x 77

Entered by: Sheila Kristynik

Pattern by: Pinterest

Pieced by: Sheila Kristynik

Longarm Machine Quilted by: Sheila Kristynik



I had been working with Easy Piecing Grid, saw this pattern on Pinterest and wanted to make it. I love my country. My son served and we are proud of our freedom, so I called it "Freedom."

[Return to Index](#)

301 Australian Phoenix 42.5 x 50

Entered by: Janette Duke

Pieced by: Janette Duke

Longarm Machine Quilted by: Donna McGibboney





It was upsetting to see the fires in Australia damage the outback and injure so many of their wildlife. I made this wall hanging with some Australian fabric in my stash, hoping it would send good wishes that would help them and their wildlife rise again.

[Return to Index](#)

302 Red Hot 34 x 55

Entered by: Jeannie Garvin

Pattern by: Panel

Pieced by: Jeannie Garvin

Longarm Machine Quilted by: Nancy Gengler



This was inspired by the President's Steampunk Challenge. It is a panel that does not meet the size requirements of the challenge, but she is so darn cute she needed to be in the show. [Return to Index](#)

303 Grunge Mandala 33.5 x 33.5

Entered by: Bob Williams

Pattern by: Betsy Vinegrad

Pieced by: Bob Williams

Longarm Machine Quilted by: Rex Shrauner



This is my second attempt at paper piecing and I really enjoyed it. I think Rex did an amazing job quilting it.

[Return to Index](#)

[Return to Award Recipients](#)

304 Live Simply 51 x 48

Entered by: Debbie Shrauner

Pattern by: Buttons & Bees

Pieced by: Debbie Shrauner

Longarm Machine Quilted by: Rex Shrauner



I purchased this pattern on my first trip to the Houston Quilt Show 10 years ago. I used my favorite scraps to make it and learned how to manipulate felt to create "handwritten" words. My husband, Rex custom quilted it, turning a Simple quilt into a Special quilt.

[Return to Index](#)

[Return to Award Recipients](#)

305 Dream Big Leaf 40 x 40

Entered by: Marsha Corley

Pattern by: Hoffman Fabrics

Pieced by: Marsha Corley

Longarm Machine Quilted by: Yvonne Wolfson



My sister, Yvonne Wolfson, custom quilted the Dream Big Leaf Panel for my 67th birthday. She let me choose the color of the panel and thread. [Return to Index](#)

306 Fractured Skyline 33 x 28

Entered by: Sheryl Levy

Pieced by: Marsha Corlley

Domestic Machine Quilted by: Sheryl Levy



I was attracted to this panel, my first one. I wanted to do something different with it rather than just borders. I found the panel in the dollar bin at a quilt store and felt safe experimenting with it.

[Return to Index](#)

307 Shine on Harvest Moon 44 X 44

Entered by: Bob Williams

Pattern by: Pinterest

Pieced by: Bob Williams

Longarm Machine Quilted by: Nancy Gengler



I changed the colors from the original to look like a full moon. Nancy did an awesome job quilting it. [Return to Index](#)

308 Oriental Windows 52 x 53

Entered by: Yvonne Wolfsen

Pieced by: Yvonne Wolfsen

Longarm Machine Quilted by: Yvonne Wolfsen



Sister Challenge with my sister Marsha Corlley. One yard of the same fabric outside of our normal color wheel to be used in a quilt. We could use as little or as much as we wanted. I used the focus fabric as the panes of the windows and added borders with paper pieced corners using coordinating fabrics. [Return to Index](#)

309 Sisters' Challenge – Kimono 56 x 56

Entered by: Marsha Corley

Pattern by: Panel Kimono Quilt pattern, Annie's

Pieced by: Marsha Corley

Longarm Machine Quilted by: Marsha Corley



My sister and I decided to take a piece of oriental fabric and make a Sisters' Challenge quilt. The challenge fabric is the one with the golden peacocks in it. I decided to blend a few other oriental fabrics to make a kimono.

310 Gatherer's Star 42 x 42

Entered by: Dr. Carolyn Troupe

Pieced by: Dr. Carolyn Troupe

Longarm Machine Quilted by: Carolyn Sponsky



With the Hunter's Star as a starting inspiration and using scraps left over from other projects, I seemed to have ended up with something else altogether. Ergo, the "Gatherer's Star." The backing surprisingly shows off the quilting design quite nicely. [Return to Index](#)

311 Elephants in the Rainbow 42 x 56

Entered by: Beth Collins

Pieced by: Beth Collins

Domestic Machine Quilted by: Beth Collins



This is the quilt I made for Bladen Formes, my first grandson, for his baby nursery twenty years ago. (I also designed and hand painted the walls with big scenes of colorful elephants and other animals in hot air balloons, etc.) I had it quilted on a long arm back then. Unfortunately, the batting the quilter used was dacron which is typically used as part of the process to upholster couch pillows so it was incredibly stiff. It hung on the wall for a long time and eventually got packed away. This spring I ran across it and hung it in my studio and just hated the way it felt. SO, one day, I took it down and began the process of removing every single quilting stitch. After I put it all back together by quilting it myself, I just loved how soft it is. It's never too late to fix a quilt and give it new life. I have done this several times, until, at last, I am satisfied.

[Return to Index](#)

312 Rainbow Flowers 45.5 x 56.5

Entered by: Dee Bradford

Pattern by: Jinny Beyer

Pieced by: Dee Bradford

Longarm Machine Quilted by: Dee Bradford



Hand pieced using scraps from my stash and "rescued" scraps from a long ago quilt retreat. When I started piecing, I did not realize how many pieces of fabric would come together in the intersections, which became a challenge when putting the flowers into rows and columns. I also had to get creative and draw my own templates for the border as the instructions I had from a magazine were only templates for the flowers and stars. I am so pleased it is finally done as it really was a "forever" project.

[Return to Index](#)

[Return to Award Recipients](#)

313 A Kaleidoscope of Redwork 48 x 48

Entered by: Shirley P. Reagan

Pattern by: Patchwork Blocks from Little Blocks 365: Sentimental Stitches

Pieced by: Shirley P. Reagan

Longarm Machine Quilted by: Nancy Gengler



Last year, I pieced Blocks 365 from Sentimental Stitches (365 foundation pieced blocks each finishing at 3 inches square). I knew I wanted to construct a small quilt; thus, after piecing 162 of the blocks, I considered a variety of ways to set the blocks. After determining how I wanted to set the blocks, I calculated the sizes for the setting blocks, determined how large I wanted the quilt to be and constructed the setting blocks in the sizes and colors needed. I then selected 86 of the 3-inch foundation pieced blocks to use for this quilt and assembled the quilt.

[Return to Index](#)

[Return to Award Recipients](#)

314 Row by Row 45 x 52

Entered by: Jeannie Garvin

Pattern by: Lori Holt

Pieced by: Jeannie Garvin

Longarm Machine Quilted by: Nancy Gengler



This is a Lori Holt block of the month pattern that I modified to make into a wallhanging. All the fabric and buttons used are part of her collections. Fun to make. [Return to Index](#)

315 Dresden Blooms 50 x 50

Entered by: Donna Motley

Pattern by: Cozy Strip Club

Pieced by: Donna Motley

Longarm Machine Quilted by: Sally Brown



Several 1930s fabric aficionados met in my home and we traded fat quarters from the many quilt shows we attended. I chose this pattern so I could showcase a variety of 1930s.

[Return to Index](#)

[Return to Award Recipients](#)

316 Disappearing Mary Engelbreit 45 x 45

Entered by: Debbie Dover

Pattern by: Disappearing 9 Patch by Brita Nelson

Pieced by: Debbie Dover

Longarm Machine Quilted by: Mary Harris



This sampler used fabric from my Mary Engelbreit collection, which I love. Each block is a "Disappearing 9-Patch" that I learned in a Guild workshop. This workshop was my first time to learn in a Zoom meeting over the internet and I learned a lot.

[Return to Index](#)

401 Bye, Bunny Bunting 49 x 58

Entered by: Dr. Carolyn Troupe

Pattern by: Denise Lipscomb "Cottontail Meadow"

Pieced by: Dr. Carolyn Troupe

Longarm Machine Quilted by: Carolyn Sponsky



This quilt's bunny template was just as cute as a bunny's ear. Once started, they began to multiply, almost exponentially, in all these wonderful, newly introduced reproduction fabrics; a first for me. The bunnies may look extra puffy because of additional polyester batting under each one.

[Return to Index](#)

402 Bad Hare Day 40 x 56

Entered by: Nancy Richardson

Pattern by: Karen Brow-Meier

Pieced by: Nancy Richardson

Domestic Machine Quilted by: Nancy Richardson



I was interested in making this quilt after viewing a Zoom program presented by Karen Brow-Meier at a Quilter's Guild of Parker County meeting. The humor of the rabbit running away with a quilt block inspired me to attempt new techniques including paper piecing, hand appliqué, and freestyle machine quilting (shown on the rabbit and fence rails).

[Return to Index](#)

403 Love From Above 40 x 82

Entered by: Rex Shrauner

Pattern by: Keri Designs

Pieced by: Rex Shrauner

Longarm Machine Quilted by: Rex Shrauner



Charley Harper is my all-time favorite artist. I loved this pattern, and wanted to try my hand at needle-turned appliqué. The quilting is an original computerized design.

[Return to Index](#)

404 Rory 27.5 x 31.5

Entered by: Rex Shrauner

Pieced by: Rex Shrauner

Domestic Machine Quilted by: Rex Shrauner



"Rory" was made in a workshop taught by Carol Morrissey titled "Exaggerated Pointillism." Rory is our male Sheltie, and as you can see, he has quite the personality! I decided to quilt Rory on my domestic in order to have the control I needed to ensure that every point was sufficiently attached. Technique: Exaggerated Pointillism using raw-edge appliqué. Quilting Thread: Superior Threads Micro-quilter (100 wt. Polyester).

[Return to Index](#)

[Return to Award Recipients](#)

405 Elmer 35 x 35

Entered by: Kathleen Poznick

Pieced by: Kathleen Poznick

Domestic Machine Quilted by: Sassy Angel



When I was a children's librarian, I always used the book "Elmer" by David McKee, whenever I had the theme of elephants. I loved that Elmer was different from other elephants and learned that his friends valued his uniqueness.

[Return to Index](#)

406 Christmas Frames 62 x 72

Entered by: Dee Bradford

Pattern by: Janet Hoefler

Pieced by: Dee Bradford

Longarm Machine Quilted by: Dee Bradford



I had purchased this pattern by a local designer about fifteen years ago because I loved the store sample, but my appliqué skills just weren't up to the challenge back then. Last summer, I decided to give it a try - it doesn't seem so overwhelming now. I finished the top just in time to display it last Christmas by pinning it to another quilt. But now, it is quilted and ready for a place of honor this year.

[Return to Index](#)

[Return to Award Recipients](#)

408 It's a Miracle Garden 48.5 x 64.5

Entered by: Donna Napier

Pattern by: Jason Yenter & original blocks

Pieced by: Donna Napier

Longarm Machine Quilted by: Susan Corbett



I was given Jason Yenter's "Enchanted Garden" quilt pattern which was a machine applique block of the month. I made changes to the flowers so I could use needle turn applique. I used his color scheme for the sashing around the blocks and chose the floral colors from the sashing.

[Return to Index](#)

[Return to Award Recipients](#)

409 Happy Circles 45 x 51

Entered by: Shirley Stevenson

Pattern by: Jason Yenter & original blocks

Pieced by: Shirley Stevenson

Domestic Machine Quilted by: Shirley Stevenson



I love circles because they represent so many things. Our world we live on is a circle, the sun and the moon are circles, etc. Life is a circle - mine has been a good circle.

[Return to Index](#)

[Return to Award Recipients](#)

410 Talavera Medallion 63 x 63

Entered by: Dee Bradford

Pattern by: Modified J. Michelle Watts pattern

Pieced by: Dee Bradford

Longarm Machine Quilted by: Ami Krenzel



Prepared edge hand appliqué blocks were started on a trip to Canada with my daughter in 2012. The pattern was originally purchased because it reminded me of my home in New Mexico. After completing 4 of the 9 blocks, I decided I didn't want to go further: there were So Many teardrops. Instead I put the 4 blocks together and modified the border to make a medallion shape. I loved how that turned out but I had no idea how to quilt it. So it was put away for several years while I thought about how to complete it. Last year, I mentioned it to a friend who quilts professionally and she wanted to "have fun with it," so I shipped it to her. We are both thrilled with the resulting collaboration.

[Return to Index](#)

[Return to Award Recipients](#)

411 Blue Plate Special 53 x 66

Entered by: Jeannie Garvin

Pattern by: Magazine

Pieced by: Jeannie Garvin

Longarm Machine Quilted by: Nancy Gengler



The pattern was in an old magazine, but very scrappy. I like the simple design of the piecing. This quilt shines because of the custom quilting.

[Return to Index](#)

412 My Serenity Garden 55.5 x 72.5

Entered by: JoAnn Russell

Pattern by: McCall's Magazine

Pieced by: JoAnn Russell

Domestic Machine Quilted by: JoAnn Russell



Spring is a special time in my garden and this quilt represents that very special place. My flowers are bright colors, pastels, and many different hues. They blow and wave in the breeze; the bees and butterflies gather nectar. The garden perimeter is varied and random following the hillside - it is perfection as it is my happy place - My Serenity Garden.

[Return to Index](#)

413 Reverse Applique Rose Window 31 x 31

Entered by: Dee Bradford

Pattern by: Eye of the Beholder Quilts

Pieced by: Dee Bradford

Longarm Machine Quilted by: Dee Bradford



Reverse appliqué is one of my favorite Forever projects as it is so portable once the basting along the stitching lines is done. But this pattern was so much fun and working with the batik fabrics so enjoyable, I kept putting off other projects to work on it. Once the top was complete, It needed something special to go with the intricate appliqué so I tries the looped binding. It now has a place of honor in my home on my parent's round coffee table - it fits perfectly.

[Return to Index](#)

[Return to Award Recipients](#)

414 Feather 24 x 87

Entered by: Rex Shrauner

Pattern by: Madi Hastings

Pieced by: Rex Shrauner

Longarm Machine Quilted by: Rex Shrauner



I saw the pattern "Aviary" at the Houston Quilt Show several years ago, and decided that I wanted to make it. The top itself didn't take long to construct, but deciding on the quilting pattern took several years. I looked through many magazines and Pinterest pages for inspiration! I finally decided on the patterns you see here - something I call "Controlled Graffiti."

Technique: Traditional piecing and raw-edge appliqué. Quilting Thread: Superior Threads Sew Fine (50 wt. Polyester)

[Return to Index](#)

[Return to Award Recipients](#)

501 Rabbits Return 37 x 37

Entered by: Beth Collins

Pieced by: Beth Collins, Laura Formes, Morgan Formes

Domestic Machine Quilted by: Beth Collins, Laura Formes, Morgan Formes



My daughter, Laura Formes, made these tiny log cabin blocks as her first quilt project many years ago. After that frustrating experience, she never sewed again. I made the blocks into a quilt and she was so proud of it. Years later, her daughter Morgan and her little girlfriend got up in the middle of the night and decided to make a quilt. Having no fabric, they used their little dull scissors to chop up this quilt, as well as TWO others I had made. They used a stapler to "sew" the pieces back together!!! You can imagine the feelings when her mother found this mess the next day. At the end of my visit, I told her "Morgan, I forgive you" and I got the biggest hug as she thanked me. I kept all the bits and pieces, and when they came for a girls retreat this summer, we put it back together again. This time Morgan used a real sewing machine! It's never too late to fix a quilt and give it a new life. This quilt is a constant reminder to take the opportunity to mend a broken situation and to express unconditional love and forgiveness.

[Return to Index](#)

[Return to Award Recipients](#)

502 Dancing 9 Patch 87.5 x 87.5

Entered by: Bent Needle Bee

Pattern by: Bonnie K Hunter

Pieced by: Bent Needle Bee

Longarm Machine Quilted by: Dee Bradford



This quilt was made by members of the Bent Needles Bee, and showcases fabric from the 1930s. This scrappy quilt will be available for the September 2023 Quilter's Guild of Parker County auction.

[Return to Index](#)

[Return to Award Recipients](#)

503 Polka Dot Churn Dash 70 x 70

Entered by: Kathleen Poznick

Pattern by: Traditional

Pieced by: Kathleen Poznick

Longarm Machine Quilted by: Sassy Angel



A group of ladies got together online under the direction of Myra Hall and exchanged churn dash blocks with at least one polka dot fabric. Each participant was free to join the blocks in whatever arrangement they liked.

[Return to Index](#)

[Return to Award Recipients](#)

601 Lucy Boston Orient 31 x 37

Entered by: Yvonne Wolfsen

Pieced by: Yvonne Wolfsen

Longarm Machine Quilted by: Yvonne Wolfsen



Lucy Boston - English Paper Piecing by hand. Hand appliquéd on satin.
Original design, all satin fabrics. Long-arm quilted. [Return to Index](#)

602 Hexagons Meet Yo-Yos 38 x 56

Entered by: Beth Collins

Pieced by: Beth Collins

Domestic Machine Quilted by: Beth Collins



The hexagons were cut using a plastic template by Daisy and Grace, which was a tremendous benefit. I planned the color arrangement so it could be reversible. After I sewed them all together by hand, I thought it looked rather plain so I decided to make some yo-yos. I used a plastic yo-yo gadget by Clover so I didn't have to precut all the circles. This allowed me to do all the sewing on the go. Rather than have the sides offset by hexagon shapes, I made half-hexagons to give the illusion of a straight line. That was not so easy and yes, it is an illusion.

[Return to Index](#)

604 The Dresden Eclipse 52.5 x 52.5

Entered by: Sandra McDonald

Pattern by: Cozy Quilt

Pieced by: Sandra McDonald

Longarm Machine Quilted by: Sassy Angel



I saw the quilt being done by Jordan's Fabrics on YouTube. I loved this quilt, especially the fabric. I used a smaller scrappy border and the larger border was done with material from my stash. I always love a scrappy binding! [Return to Index](#)

605 My Scrapbook of American Quilts 61 x 78

Entered by: Dollie Blevins

Pieced by: Dollie Blevins

Longarm Machine Quilted by: Dollie Blevins



I was studying the history of quilting in America and thought it would be fun to make a quilt representing the different time periods.

[Return to Index](#)

[Return to Award Recipients](#)

606 Gulf Shores Memories with Meme & Pawpaw 50 x 72

Entered by: Cheryl Russell

Pieced by: Cheryl Russell

Longarm Machine Quilted by: Cheryl Russell



I made this for my granddaughter, Glory, after her graduation trip with us to the Gulf Shores, Alabama. I designed this with fish, not knowing how I would finish this. Then I embroidered "BEACH," put material that looked like sand on the bottom and embroidered flip-flops, coral, crab, shell and sand dollar. The striped material reminded me of a beach chair. I embroidered things we did on the fish. The quilting reminds me of waves. Beautiful memories.

[Return to Index](#)

607 Consider the Lilies 36 x 56

Entered by: Jane Babb

Pieced by: Jane Babb

Longarm Machine Quilted by: Rhonda Kessler



I bought these preprinted blocks 20 years ago. I finally put them into a quilt and had it quilted by Rhonda Kessler during COVID (2020-2021).

[Return to Index](#)

[Return to Award Recipients](#)

608 Serra and Brent Wedding Quilt 33 x 41

Entered by: Brenda Landureth

Pieced by: Brenda Landureth

Hand Quilted by: Brenda Landureth



This is a purple lavender crazy quilt made for our youngest daughter. It includes many hand colored silks, silk ribbon embroidery, hand and machine embroidery, hand sashiko stitching, candlewicking, tatted lace and fabric appliqué, buttons and hand beadwork, all used to embellish this crazy quilt. It has typical Victorian insects and floral themes. However, the entire quilt has a lavender theme. We included personal verbiage and sayings that are part of their life together.

[Return to Index](#)

[Return to Award Recipients](#)

609 A Year with the Kids 46.5 x 60

Entered by: Cindy Pastor

Pattern by: Vevia Bealieu

Pieced by: Cindy Pastor

Longarm Machine Quilted by: Nancy Gengler



Original pattern designed by Vevia Bealieu. Many liberties have been taken.

[Return to Index](#)

[Return to Award Recipients](#)

701 Mask-er-aid 14 x 13

Entered by: Sheryl Levy

Pieced by: Sheryl Levy

Domestic Machine Quilted by: Sheryl Levy



This mini quilt was made from the cuttings of the 200 masks I made during the pandemic. The quilting is miniature masks.

[Return to Index](#)

702 Haunted Neighborhood 24 x 24

Entered by: Mary Williams

Pattern by: Kim Lapacek

Pieced by: Mary Williams

Domestic Machine Quilted by: Mary Williams



My version of a Halloween wonky house quilt. Many hours were spent fussy cutting and quilting on my domestic and Sweet Sixteen machines.

[Return to Index](#)

703 Blue Plate Special 28 x 28

Entered by: Cindy Pastor

Pieced by: Cindy Pastor

Longarm Machine Quilted by: Nancy Gengler



No description provided.

[Return to Index](#)

[Return to Award Recipients](#)

704 Lone Star State 28.5 x 28.5

Entered by: Ruth Arthur

Pattern by: P3 Designs

Pieced by: Ruth Arthur

Hand Quilted by: Ruth Arthur



When we moved to Texas in 2018, this is the only sewing project I kept out. A small hand appliqué project was ideal for a 3-month transitional period in an apartment.

[Return to Index](#)

[Return to Award Recipients](#)

705 Hearts Make Houses Homes 25 x 23

Entered by: Sheryl Levy

Pieced by: Sheryl Levy

Domestic Machine Quilted by: Sheryl Levy



Dresden plate wedges morphed into a wonky, abstract house. Much of my stash fabric had hearts, so the quilt became "Hearts Make Houses Homes." Square and round was boring, so I cut the quilt into a house shape. With some new binding techniques I got at the QGPC retreat, this is my best binding ever. Check the back - little abstract houses and some leftover wedges incorporated, along with a heart.

[Return to Index](#)

706 Succulents 8.25 x 23.25

Entered by: Pam Luke

Pieced by: Pam Luke

Domestic Machine Quilted by: Pam Luke



This quilt was made for the Guild's Paint Chip Challenge in 2019. The quilt had to be three colors from paint chips that were named beginning with the three initials of our name. The cacti were fun to embellish using beads. The 3D Hen and Chicks cactus in the center was a challenge.

[Return to Index](#)

[Return to Award Recipients](#)

707 Newly Hatched 20 x 25

Entered by: Debbie Dover

Pattern by: Newly Hatched by Karen Brow-Meier

Pieced by: Debbie Dover

Domestic Machine Quilted by: Debbie Dover



I enjoyed the challenge of "working outside the box" from the workshop in the spring of 2022. Embellishments include shell buttons, costume jewels, pearls and sequins.

[Return to Index](#)

708 Chewbacca: Fiercely Loyal 16 3/8 x 23 3/4

Entered by: Karen Pickford

Pieced by: Karen Pickford

Domestic Machine Quilted by: Karen Pickford



For several years, I have wanted to create a portrait of my dog who died in 2021. I took a class at a quilt show in early 2020, then an online workshop with Lea McComas in May 2022 to learn how to accomplish my goal. "Fiercely Loyal" was the description of the Chow Chow breed, which was part of his DNA.

[Return to Index](#)

[Return to Award Recipients](#)

709 Little Red Bird 18 x 18

Entered by: Beth Collins

Pieced by: Jeannie Garvin

Domestic Machine Quilted by: Jeannie Garvin



This darling little quilt was sewn by a long time member of Quilter's Guild of Parker County, Jeannie Garvin, who graciously gifted it to me. Jeannie is known for her yo-yo trees. She individually cuts out all the circles for the yo-yos and sews each one by hand. Buttons were added to add more personality as well as the little red bird. Jeannie even quilted it herself on her domestic machine.

[Return to Index](#)

[Return to Award Recipients](#)

801 Square Dance 23 x 32

Entered by: Claire Bassham

Pieced by: Claire Bassham

Domestic Machine Quilted by: Claire Bassham



Clair, age 10, learned to sew by making a pillowcase last year. She wanted to learn more so she chose some scrappy 5-inch squares and carefully arranged them. This is her first quilt and she made it for her doll. She also did her own quilting and binding.

[Return to Index](#)

[Return to Award Recipients](#)

802 Mint Chocolate Sampler 51 x 63

Entered by: Ansley Boren

Pieced by: Ansley Boren

Longarm Machine Quilted by: Rex Shrauner



This is my first quilt. I started sewing in 4th grade with Miss Debbie (Shrauner). A few years ago, I started this quilt with her and she taught me how to sew and helped me make this quilt!

[Return to Index](#)

[Return to Award Recipients](#)

901 Asian Safari 66 x 74

Entered by: Dixie Ehrhorn

Pattern by: Donna Jordan

Pieced by: Dixie Ehrhorn

Longarm Machine Quilted by: Mary Harris



I love all things African. An animal print layer cake embellished with chopsticks.

[Return to Index](#)

[Return to Award Recipients](#)

902 Aurora Borealis 62 x 70

Entered by: Dianne Minter

Pattern by: Prism by Natalie Crabtree

Pieced by: Dianne Minter

Longarm Machine Quilted by: Nancy Gengler



Bargello quilts have always fascinated me so I finally decided to try one. I love the flow of vibrant colors, which remind me of the Northern Lights.

[Return to Index](#)

[Return to Award Recipients](#)

903 The Library 60 x 70

Entered by: Lynn Main

Pattern by: Gyleen Fitzgerald

Pieced by: Lynn Main

Longarm Machine Quilted by: Lynn Main



Books on shelves. Diamonds in long rows. Unusual colors.

[Return to Index](#)

[Return to Award Recipients](#)

904 My Yoyo Quilt 54 x 70

Entered by: Anita Ruthenberg

Pieced by: Anita Ruthenberg

Longarm Machine Quilted by: Sassy Angel



I love improv piecing and am learning about color. I love this weird funny quilt.

[Return to Index](#)

905 Free Wheeling Circles 46 x 46

Entered by: Lynn Main

Pattern by: Gyleen Fitzgerald

Pieced by: Lynn Main

Longarm Machine Quilted by: Lynn Main



Curves cut freehand, raw edge appliqué. Washed to get fringe look.

[Return to Index](#)

906 My Heart 71 x 89.5

Entered by: Dixie Ehrhorn

Pattern by: Annie's Catalog

Pieced by: Dixie Ehrhorn

Longarm Machine Quilted by: Mary Harris



Each color strip is unique and the background is controlled mix of off-whites.

[Return to Index](#)

907 Color Wheel Maze 72 x 80.5

Entered by: Anita Ruthenberg

Pieced by: Anita Ruthenberg

Longarm Machine Quilted by: Sassy Angel



A free scrap bag full of triangles got me started binge-making scrappy half-square triangles. This was one idea I had while sewing HSTs (half-square triangles). I did graph this one.

[Return to Index](#)

908 New Moon 41 x 41

Entered by: Bob Williams

Pattern by: I Love to Quilt

Pieced by: Bob Williams

Longarm Machine Quilted by: Nancy Gengler



The 3D effect of this Storm at Sea pattern appealed to me and looked like a challenge.

[Return to Index](#)

1001 Scrap Obsession 63 x 73

Entered by: Joanne Goodman

Pieced by: Joanne Goodman

Longarm Machine Quilted by: Nancy Gengler



A friend gave me a Walmart bag full of batik scraps. I had just purchased the Creative Grids Scrap Crazy 6 Template to use with my own ever-growing stack of scraps and decided to try the templates using the batiks. After making several blocks, I became obsessed to see how much of a quilt I could make out of the scraps in the bag. Using every bit of fabric and some orphan blocks that were also in the bag, those scraps turned into a good sized, beautiful quilt - truly making something out of nothing!

[Return to Index](#)

[Return to Award Recipients](#)

1002 Picture the World 63 x 76

Entered by: Marcy Borden
Pieced by: Marcy Borden
Hand Quilted by: Marcy Borden



Thirty years of work. Each block represents a different country or region of the world and contains nine squares with iconic pictures of that area. As closely as possible, I arranged the blocks to match the globe. Western Hemisphere to eastern, northern to southern. The sky border fades from day to night. The center block depicts the world surrounded by ocean. Three birds and a galaxy are appliquéd in the border. Some deep-sea objects are machine appliquéd in the ocean. The only machine quilting is in the border.

[Return to Index](#)

[Return to Award Recipients](#)

1003 Orange Challenge 48 x 61

Entered by: Joanne Goodman

Pattern by: Connecting Threads

Pieced by: Joanne Goodman

Longarm Machine Quilted by: Sassy Angel



As a beginner quilter, I found it difficult to pick fabrics for a quilt. The many prints and colors available were overwhelming, and I found myself only making quilts from kits. A fellow guild member challenged me to make something with the orange sun fabric I used on the back of this quilt. I consulted a color wheel, chose complementary fabrics and found a pattern on Connecting Threads that suited my skill level. What a fun learning experience with a satisfying result!

[Return to Index](#)

1004 Gnome is Where Your Garden Grows 48 x 61

Entered by: Sandi Cardenas

Pattern by: Connecting Threads

Pieced by: Sandi Cardenas

Longarm Machine Quilted by: Rex Shrauner



I still consider myself a beginning quilter but I really enjoy doing it when I can find time. I love doing applique and I love gnomes, so when I saw this pattern and fabric, I could not help myself. My quilter and teachers are my sister and brother-in-law (Debbie and Rex Shrauner) who I love with all my heart. They got me into sewing probably 6 years ago. They are always willing to help and constantly trying to teach me new things.

[Return to Index](#)

[Return to Award Recipients](#)

1005 Evening Swans 50 x 63

Entered by: Frances Randall

Pattern by: Jordan Fabrics

Pieced by: Frances Randall

Domestic Machine Quilted by: Frances Randall



Ribbon Quilt by Jordan Fabrics. Fabric is Enchanted Lake by Flaurie & Finch. This is my second quilt made without help.

[Return to Index](#)

1006 I Love Daisies 50 x 50

Entered by: Sharon Handy

Pieced by: Sharon Handy

Domestic Machine Quilted by: Sharon Handy



I was inspired by Brianna Rang Motzkus "Tridazzle Quilt" on YouTube. Instead of a layer cake, I matched a solid with four different background color daisy prints. Later, with advice from quilting friends, I added a white sashing with cornerstones of the four daisy prints. I added a border of the purple daisy prints and back of purple daisy prints and extra squares.

[Return to Index](#)

1007 Home on the Range 60 x 60

Entered by: Nancy Gudino

Pattern by: Tana Mueller

Pieced by: Nancy Gudino

Longarm Machine Quilted by: The Berry Patch



I moved to Weatherford in 2018 and attended my first Quilter's Guild of Parker County quilt show. At the show, I bought tickets to the raffle baskets and won this kit! What a great surprise and welcome into this quilting community.

[Return to Index](#)

[Return to Award Recipients](#)

1101 Log Cabin Star 100 x 100

Entered by: Sandra Edmiston

Pattern by: Rachel's of Greenfield Picture enlarged by maker

Pieced by: Sandra Edmiston

Longarm Machine Quilted by: Will Simpson



I made this quilt for my brother-in-law for Christmas. He sent me a picture of this quilt. It was a 30 x 30 inch quilt kit. He wanted as king size quilt. I went to EQ7 and made my own pattern.

[Return to Index](#)

1102 Cosmic Chaos 59.5 x 74

Entered by: Donna McGibboney

Pattern by: Cosmic Crush by Morgan McCollough

Pieced by: Donna McGibboney

Longarm Machine Quilted by: Donna McGibboney



Cosmic Chaos. I saw a fat quarter pack that had 24 fabrics and thought this would be a good pattern to use. Since some of the fabrics have a paisley pattern, I used a paisley quilting pattern.

[Return to Index](#)

[Return to Award Recipients](#)

1103 Showering Stars 72 x 86

Entered by: Yvonne Wolfsen

Pattern by: Robin Pickins

Pieced by: Yvonne Wolfsen

Longarm Machine Quilted by: Yvonne Wolfsen



A jelly roll friendly showcasing blues and greens. I love the effect of shooting stars no matter how you lay the quilt.

[Return to Index](#)

[Return to Award Recipients](#)

1104 So Many Blessings 23 x 23

Entered by: Dianne Minter

Pattern by: Robin Pickins

Pieced by: Dianne Minter

Domestic Machine Quilted by: Dianne Minter



The Carpenter's Star always reminds me of all the blessings that surround me. It is one of my very favorite star patterns and the first wall hanging created for my new home.

[Return to Index](#)

[Return to Award Recipients](#)

1105 Starry Night in the City 48 x 62

Entered by: Sheryl Levy

Pieced by: Sheryl Levy

Domestic Machine Quilted by: Sheryl Levy



The "skyscrapers" were orphan blocks, the first I ever made when I started quilting 7 years ago. After arranging and rearranging the blocks on the design wall, I realized they reminded me of skyscrapers. The starry night fabric from my stash was perfect. After the last 2 years, it is important to look heavenward and see the stars. We will get through this.

[Return to Index](#)

1106 It's Written in the Stars 29 x 29

Entered by: Bob Williams

Pattern by: Pinterest

Pieced by: Bob Williams

Domestic Machine Quilted by: Bob Williams



My modern interpretation of the quilt show theme.

[Return to Index](#)

[Return to Award Recipients](#)

1107 Stars Over Ukraine 42 x 50

Entered by: Lynn Main

Pieced by: Lynn Main

Longarm Machine Quilted by: Lynn Main



Using the traditional block Dandy, a collection of stars in the Ukrainian colors of blue and yellow.

[Return to Index](#)

[Return to Award Recipients](#)

1108 Friendship Stars All Around the Town 60 x 72.5

Entered by: Lynn Main

Pattern by: Traditional house block by Jenny Doan

Pieced by: Lynn Main

Longarm Machine Quilted by: Lynn Main



I have always loved house quilts and especially the mini-houses that were so popular a few years ago. When watching several Missouri Star videos I ran across their small house pattern and decided it would be a great one to use scraps. After making an entire village of houses, I tried out several ideas for a border that would offset the graphic design of the houses. I finally decided the simplicity of the friendship star worked best. And it is appropriate as if it reminds me of all the quilting friendships I have made over the years.

[Return to Index](#)

1109 Texas Dancing Stars 59 x 70

Entered by: Sandra McDonald

Pattern by: The Quilt Factory

Pieced by: Sandra McDonald

Domestic Machine Quilted by: Sandra McDonald



I saw this quilt on YouTube by Jordan's Fabrics. I thought this was an unusual and pretty pattern. I did change up the border to make it oblong instead of square.

[Return to Index](#)

1201 Daydreams

Entered by: Bob Williams

Pieced by: Bob Williams

Domestic Machine Quilted by: Bob Williams



[Return to Award Recipients](#)

1301 Who Are You?

Entered by: Pam Luke

Pieced by: Pam Luke

Domestic Machine Quilted by: Pam Luke



[Return to Award Recipients](#)